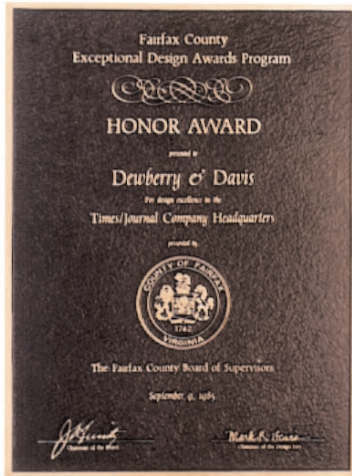


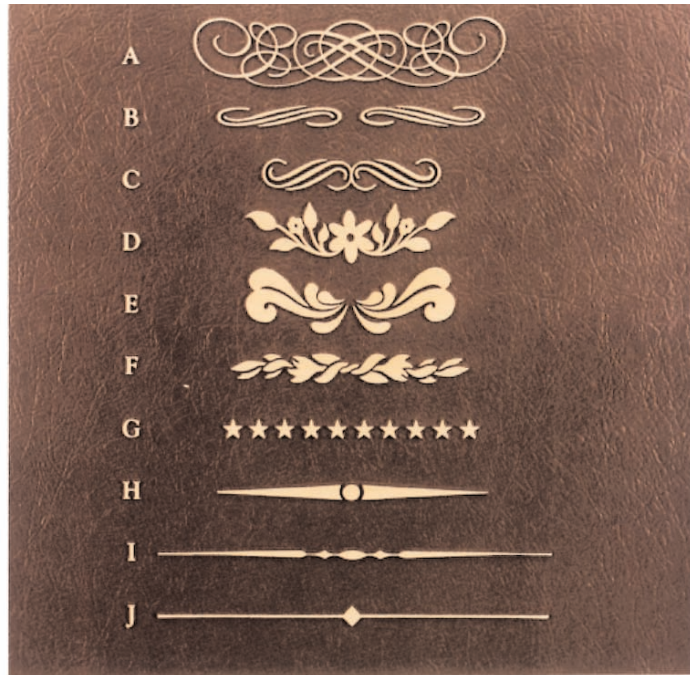
Camera-ready artwork

by Architectural Bronze & Aluminum Corp. 800.339.6581 | sales@architecturalbronze.com | 847.674.3638 | fax 847.674.3452

Shown are our ten most popular divider bars. They are all Flat Relief, and can be used to enhance the appearance of your plaque—space permitting. See our Suggested Retail Price List for cost.



Note use of Style (A) Divider



Camera-ready art

The photo-polymer process

This process allows customers to design plaques with virtually no limitations. Plaque patterns are made directly from film negatives. A full line of standard letter styles and logos are available from Art in Bronze, or customers can send in their own camera-ready artwork, film negatives, or computer disks for custom designs. (see page 19 for examples.)

Camera-ready art requirements

This is art that is ready for photographic reproduction. Strict guidelines must be followed for this process to be used effectively for sand casting.

1. Artwork must be *full size*, black and white or film negative. Halftones and screens cannot be reproduced. Photocopies are not suitable for reproduction. Film negatives must be oversized to allow for casting shrinkage of 1/64" for every 1".
2. Typesetting must allow for at least 1/16" white space between letters.
3. Letters can be no smaller than 1/4" in height. Lines in letters and artwork can be no smaller than 1/16".
4. In some cases, portions of the art may have to be reversed in order to get the proper perspective in the casting, i.e. raised or recessed.
5. Artwork, whether film or paper, should be sent *flat or rolled* but never folded! Film must be right reading, emulsion side down (RRED).

See our Suggested Retail Price List for set-up charges on camera-ready art and film negatives.

We also provide a full-service art department for designing and retouching art. Please contact our Customer Service Department for complete information.



CORRECT



INCORRECT